

Features

- Suitable for direct in-line installation,
- Body Material steel DIN 1.7225,
- Body Surface nickel coated,
- All material is hardening,
- Flued viscosity 10 - 500 mm<sup>2</sup>/s (10-420 cSt),
- For mineral oil ISO 6743/4,

Özellikleri

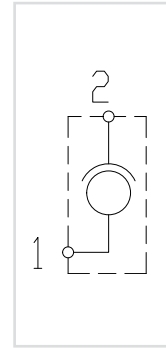
- Direkt hat üzerine montaja uygun,
- Gövde malzemesi çelik DIN 1.7225,
- Gövde yüzeyi nikel kaplama,
- Tamamı sertleştirilmiş,
- Akışkan viskozitesi 10 - 500 mm<sup>2</sup>/s (10-420 cSt),
- ISO 6743/4 Mineral yağlar için,



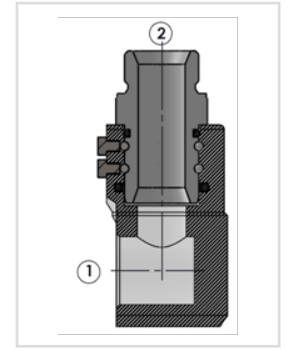
OrderCode – Sipariş Kodu

Model	Size	Thread Type – Diş Tipi
HDSR	06 = 1/4"	B = BSPP
	08 = 3/8"	N = NPT
	10 = 1/2"	U = UNF
	15 = 3/4"	
	20 = 1"	
	25 = 1 1/4"	
	30 = 1 1/2"	
	40 = 2"	

Circuit - Şema

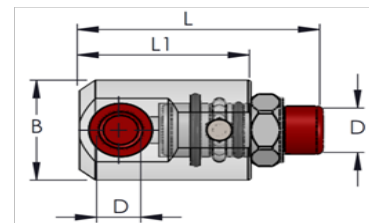
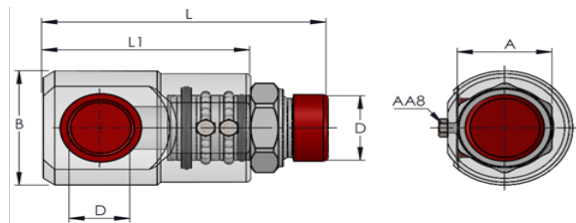


Sectional - Kesit



General Parameters and Dimensions (mm) – Genel parametreler ve ölçüler (mm)

Size - Ölçü	Q max	P max	Rotation Dönmede	Speed Devir	ØD BSPP	A1	A2	L	L1	Weight Ağırlık
	l/min	Bar	P Max Bar	Max Rpm						Kg
HDSR-06	25	400	200	210	1/4"	19	33,5	69	50	0,35
HDSR-08	30	400	200	170	3/8"	24	37,5	76	54	0,43
HDSR-10	60	300	150	160	1/2"	27	39,5	87	63	0,53
HDSR-15	100	300	150	120	3/4"	34	54,5	99	70	0,99
HDSR-20	180	300	100	100	1"	41	59	123	90	1,52
HDSR-25	280	250	80	80	1 1/4"	55	68	133	100	2,23
HDSR-30	350	200	75	70	1 1/2"	60	78	153	115	3,15
HDSR-40	500	200	60	50	2"	70	108	183	140	7,15



Model Size	1/4"	3/8"	1/2"	3/4"	1"	1 1/4"	1 1/2"	2"
1 - Tightening Torgues for stud - Sıkma Torku (Nm)	40	90	120	210	370	430	500	600
2 - Female Swivel Ends Torgue - Döner Eleman Torku (Nm)	20	35	60	115	140	190	260	320