

## Features

- Suitable for direct in-line installation,
- Body material steel DIN 1.7225,
- Body surface nickel coated,
- Flued viscosity 10 - 500 mm<sup>2</sup>/s (10-420 cSt),
- For mineral oil ISO 6743/4,
- Leakage 0 – 0,25 cm<sup>3</sup>/min

## Özellikleri

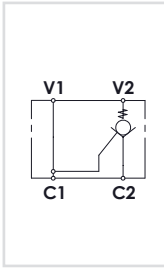
- Direkt hat üzerine montaja uygun,
- Gövde malzemesi çelik DIN 1.7225,
- Gövde yüzeyi nikel kaplama,
- Akışkan viskozitesi 10 - 500 mm<sup>2</sup>/s (10-420 cSt),
- ISO 6743/4 Mineral yağlar için,
- İç kaçak 0 – 0,25 cm<sup>3</sup>/min



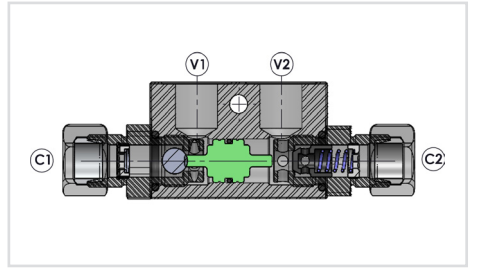
### Order Code - Sipariş Kodu

<b>RTK</b>	-	<b>06</b>	-	<b>B</b>
Model - Tip		Size - Ebat		ThreadType Dişi Tipi
RTK =Single		06 = 1/4"		B = BSPP
		08 = 3/8"		N = NPT
				U=UNF

### Circuit - Şema

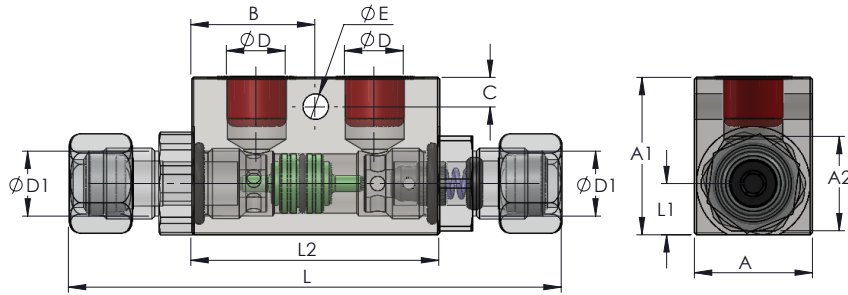


### Sectional - Kesit



### General Parameters and Dimensions (mm) – Genel parametreler ve ölçüler (mm)

Size - Ölçü	Q max	P max	ØD	ØD1	A	A1	A2	B	C	E	L	L1	L2	Weight Ağırlık
	l/min	Bar	BSP	M18x1,5										Kg
RTK-06	15	320	1/4"	12	30	40	24	31,5	7,5	6,5	108	22,5	63	0,60
RTK-08	35	320	3/8"	12	30	40	24	31,5	7,5	6,5	108	22,5	63	0,55



### Pressure Drop – Basınç Kaybı

