

Features

- Suitable for direct in-line installation,
- Body material steel DIN 1.7225,
- Body surface nickel coated,
- Flued viscosity 10 - 500 mm²/s (10-420 cSt),
- For mineral oil ISO 6743/4,
- Leakage 0 – 0,25 cm³/min

Özellikleri

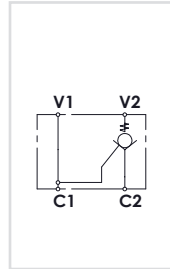
- Direkt hat üzerine montaja uygun,
- Gövde malzemesi çelik DIN 1.7225,
- Gövde yüzeyi nikel kaplama,
- Akışkan viskozitesi 10 - 500 mm²/s (10-420 cSt),
- ISO 6743/4 Mineral yağlar için,
- İç kaçak 0 – 0,25 cm³/min



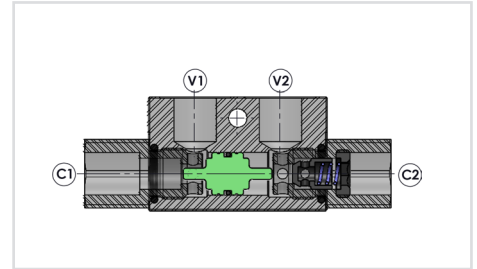
Order Code - Sipariş Kodu

HTK	-	06	-	B
Model - Tip		Size - Ebat		Thread Type Dişi Tipi
HTK =Single		06 = 1/4"		B = BSPP
		08 = 3/8"		N = NPT
		10 = 1/2"		U= UNF
		15 = 3/4"		

Circuit - Şema

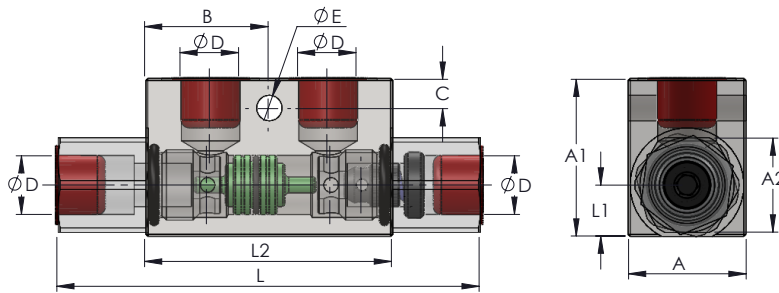


Sectional - Kesit



General Parameters and Dimensions (mm) – Genel parametreler ve ölçüler (mm)

Size - Ölçü	Q max	P max	ØD	A	A1	A2	B	C	E	L	L1	L2	Weight Ağırlık
	l/min	Bar	BSPP										Kg
HTK-06	15	320	1/4"	30	40	24	31,5	7,5	6,5	108	22,5	63	0,60
HTK-08	35	320	3/8"	30	40	24	31,5	7,5	6,5	108	22,5	63	0,55
HTK-10	45	300	1/2"	30	50	27	41	15	6,5	145	31,5	82	1,23
HTK-15	70	300	3/4"	40	60	36	50	10	8,5	192	46	100	1,90



Pressure Drop – Basınç Kaybı

