

Features

- Suitable for direct in-line installation,
- Body material steel DIN 1.0715,
- Body surface nickel coated,
- Flued viscosity 10 - 500 mm²/s (10-420 cSt),
- For mineral oil ISO 6743/4,
- Leakage 0 – 0,25 cm³/min

Özellikleri

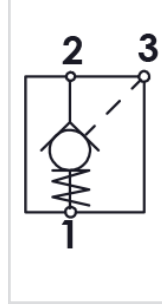
- Direkt hat üzerine montaja uygun,
- Gövde malzemesi çelik DIN 1.0715,
- Gövde yüzeyi nikel kaplama,
- Akışkan viskozitesi 10 - 500 mm²/s (10-420 cSt),
- ISO 6743/4 Mineral yağlar için,
- İç kaçak 0 – 0,25 cm³/min



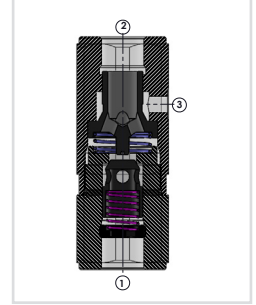
Order Code - Sipariş Kodu

HPCV - 06 - 1 - B			
Model - Tip	Size - Ebat	Spring Force - Yay Kuvveti	Therad Type - Diş Tipi
HPCV	06 = 1/4"	1 = 1 Bar *	B = BSPP
	08 = 3/8"	2 = 3 Bar	N = NPT
	10 = 1/2"	3 = 6 Bar	U = UNF
	15 = 3/4"		
	20 = 1"		

Circuit - Şema



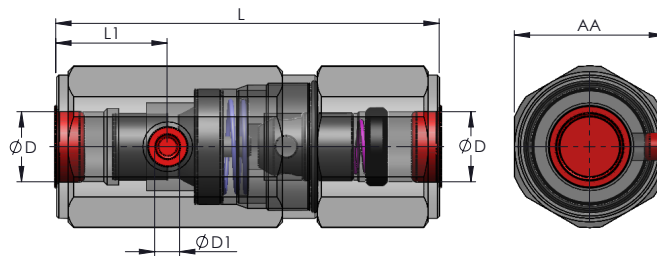
Sectional - Kesit



- * Standart spring force 1 Bar,
- * Standart yay kuvveti 1 Bar,

General Parameters and Dimensions (mm) – Genel parametreler ve ölçüler (mm)

Size - Ölçü	Q max l/min	P max Bar	Pilot Ratio Pilot Oranı	ØD BSPP	ØD1 BSPP	AA	B	L	L1	Weight Ağırlık
										Kg
HPCV-06	15	350	1:5.3	1/4"	1/4"	36	35	96	31,5	0,73
HPCV-08	30	350	1:4.4	3/8"	1/4"	41	40	109	31,5	1,00
HPCV-10	50	350	1:4.2	1/2"	1/4"	41	40	122	37	1,10
HPCV-15	90	300	1:4.0	3/4"	1/4"	55	52	132	38	2,10
HPCV-20	150	300	1:4.1	1"	1/4"	65	62	166	48	3,60



Pressure Drop – Basınç Kaybı

