

### Features

- Suitable for direct in-line installation,
- Body material steel DIN 1.0715,
- Body surface nickel coated,
- Flued viscosity 10 - 500 mm<sup>2</sup>/s (10-420 cSt),
- For mineral oil ISO 6743/4,
- Leakage 0 – 0,25 cm<sup>3</sup>/min

### Özellikleri

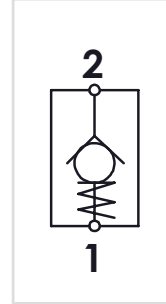
- Direkt hat üzerine montaja uygun,
- Gövde malzemesi çelik DIN 1.0715,
- Gövde yüzeyi nikel kaplama,
- Akışkan viskozitesi 10 - 500 mm<sup>2</sup>/s (10-420 cSt),
- ISO 6743/4 Mineral yağlar için,
- İç kaçak 0 – 0,25 cm<sup>3</sup>/min



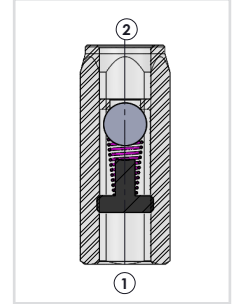
### Order Code - Sipariş Kodu

| HCB         | - | 06          | - | 1                          | - | B                      |
|-------------|---|-------------|---|----------------------------|---|------------------------|
| Model - Tip |   | Size - Ebat |   | Spring Force - Yay Kuvveti |   | Therad Type - Diş Tipi |
| HCB         |   | 06 = 1/4"   |   | 1 = 1 Bar *                |   | B = BSPP               |
|             |   | 08 = 3/8"   |   | 2 = 3 Bar                  |   | N = NPT                |
|             |   | 10 = 1/2"   |   | 3 = 6 Bar                  |   | U = UNF                |

### Circuit - Şema



### Sectional - Kesit



- \* Standart spring force 1 Bar,
- \* Standart yay kuvveti 1 Bar,

### General Parameters and Dimensions (mm) – Genel parametreler ve ölçüler (mm)

| Size - Ölçü | Q max | P max | ØD   | AA | L  | Weight Ağırlık |
|-------------|-------|-------|------|----|----|----------------|
|             | l/min | Bar   | BSPP |    |    | Kg             |
| HCB-06      | 15    | 400   | 1/4" | 19 | 55 | 0,10           |
| HCB-08      | 30    | 400   | 3/8" | 24 | 65 | 0,18           |
| HCB-10      | 50    | 400   | 1/2" | 27 | 75 | 0,23           |

